

NEW – SERIES 12 | SLIP-EASE MECHANICAL SLIP CLUTCHES

FOR ULTRA SMALL SPACES

Our smallest available slip clutch for applications where space is at a premium and a robust reliable solution is needed.



EAO 12 Adjustable Clutch



ERFS 12 Fixed Clutch

FEATURES:

- Extremely small, 3/4" outside diameter
- Torque ranges up to 8.5 lb-in
- Durable, proven, low backlash housing design
- Stainless steel options available
- Fixed, adjustable and custom designs
- Smooth, reliable breakaway and continuous slip
- Long life of 20 to 30 million revolutions in slip condition
- Bi-directional
- No lubrication needed
- Made in the USA

APPLICATION EXAMPLES:

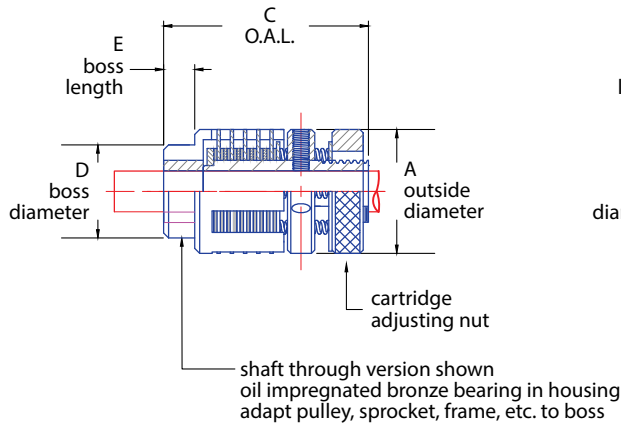
- Medical devices – fluid analyzer
- Dental instruments – implant torque wrench
- Robotics – overload protection for cameras
- Automation – miniature drive protection

CAD drawings and models available on our website:

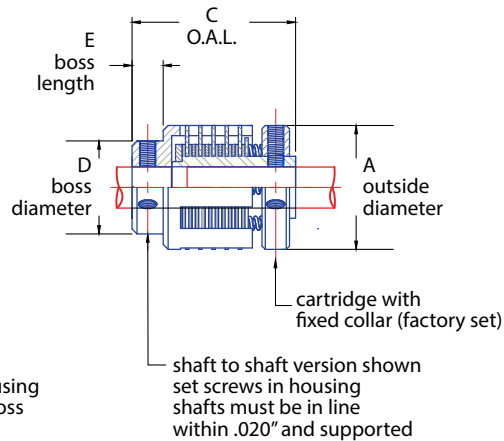
www.polyclutch.com/technical-data/cad-drawings

SERIES 12 | DESIGN SPECIFICATIONS

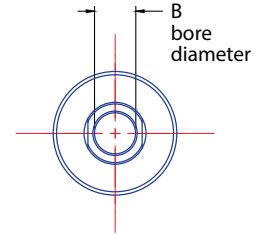
**Adjustable
EAO & EAS
EAO shown**



**Fixed
EFO & EFS
Factory Set - Non Adjustable
EFS shown**



**End View
Typical**



MODEL NUMBER	A inches (mm)	B* std. inches (mm)	B* max. inches (mm)	C inches (mm)	D* inches (mm)	E inches (mm)	Capacity @ 50 RPM		Friction Surfaces
							lb-in (Nm)	Watts	
EAO 12	0.750 (19.05)	0.1875 (5)	0.250 (6)	1.25 (31.75)	0.562 (14.28)	0.188 (4.78)	8.5 (1.0)	4.5	8
EAS 12	0.750 (19.05)	0.1875 (5)	0.250 (6)	1.25 (31.75)	0.562 (14.28)	0.188 (4.78)	8.5 (1.0)	4.5	8
EFO 12	0.750 (19.05)	0.1875 (5)	0.250 (6)	1.00 (25.40)	0.562 (14.28)	0.188 (4.78)	8.5 (1.0)	4.5	8
EFS 12	0.750 (19.05)	0.1875 (5)	0.250 (6)	1.00 (25.40)	0.562 (14.28)	0.188 (4.78)	8.5 (1.0)	4.5	8

* +0.002 / -0.000 inches (+0.05 / -0.00 mm)

Note: Bore diameters other than shown are available up to the maximum diameter.

PART NUMBER EXAMPLE

E A S 12 - 3 - 4*

- 4/16 = 0.250" bore diameter in housing
- 3/16 = 0.1875" bore diameter in cartridge
- Size 12 = 12/16 (0.75" outside diameter)
- Shaft to shaft installation type
- Adjustable torque
- Slip-Ease

*Housing bore size needed only if different than cartridge bore size.

DESIGN NOTES

- EAS & EAO models:** adjustable torque setting
- EFO & EFS models:** factory preset (fixed) torque setting
- EAS & EFS models:** shaft to shaft installation type. Provided with set screws in clutch housing
- EAO & EFO models:** shaft-through mounting to pulley, gear, sprocket, etc. Provided with oil impregnated bearing in clutch housing