



Angle arm - rigid

Versatile connection between clamping pieces and other universal gripper components



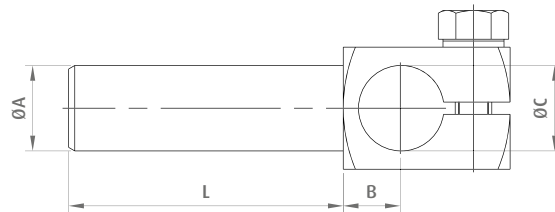
Product Description

> Flexible installation with high stability

Technical Data

Item no.	Weight [oz]
GR02.070A	0.71
GR02.071A	0.85
GR02.072A	0.99
GR02.083	1.27
GR02.084	1.59
GR02.085	1.83
GR02.100	2.15
GR02.101A	2.82
GR02.102A	3.35
GR02.103	7.16

Dimensions



Item no.	ØA [mm]	B [mm]	ØC [mm]	L [mm]
GR02.070A	10	7	10	30
GR02.071A	10	7	10	60
GR02.072A	10	7	10	90
GR02.083	14	9.5	14	45
GR02.084	14	9.5	14	90
GR02.085	14	9.5	14	130
GR02.100	20	15	20	50
GR02.101A	20	15	20	100
GR02.102A	20	15	20	150
GR02.103	30	17	30	200



Gripper arms | Angle arms

Angle arm - rotatable

Angle arm - rotatable

Secure connection of grippers



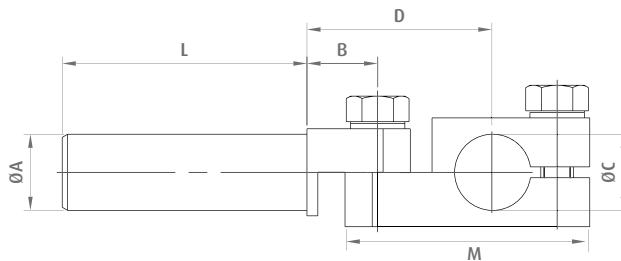
Product Description

- > High flexibility through linear and rotational adjustment
- > Easy to assemble

Technical Data

Item no.	Weight [oz]
GR02.140	1.27
GR02.141	1.41
GR02.142	1.59
GR02.153	2.12
GR02.154	2.4
GR02.155	2.75
GR02.170	3.07
GR02.171	3.63
GR02.172	4.23
GR02.180	1.48
GR02.181	1.8
GR02.182	2.08

Dimensions



Item no.	ØA [mm]	B [mm]	ØC [mm]	D [mm]	L [mm]	M [mm]
GR02.140	10	11	10	27	30	36.5
GR02.141	10	11	10	27	60	36.5
GR02.142	10	11	10	27	90	36.5
GR02.153	14	13	14	36	45	36.5
GR02.154	14	13	14	36	90	36.5
GR02.155	14	13	14	36	130	36.5
GR02.170	20	15	20	36	50	49
GR02.171	20	15	20	36	100	49
GR02.172	20	15	20	36	150	49
GR02.180	14	13	10	29	45	36.5
GR02.181	14	13	10	29	90	36.5
GR02.182	14	13	10	29	130	36.5



NEW



Modular angle arms – rotatable, reinforced
Secure connection of grippers

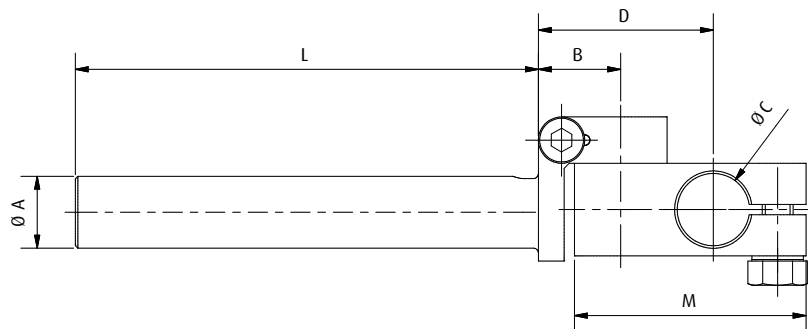
Product Description

- > Increased process reliability by optimized seating of the sprue grippers thanks to innovative clamping
- > Up to 22 % lighter than GR02.140 ff.
- > Flexible replacement of clamping head with suction head of GR03.240-242, GR03.250-252, GR03.260-263

Technical Data

Item no.	Weight [oz]
GR02.240	1.02
GR02.241	1.13
GR02.242	1.23
GR02.250	1.76
GR02.251	2.05
GR02.252	2.33
GR02.260	3.14
GR02.261	3.67
GR02.262	4.2

Dimensions



Item no.	Ø A [mm]	B [mm]	Ø C [mm]	D [mm]	L [mm]	M [mm]
GR02.240	10	14	10	26	30	35
GR02.241	10	14	10	26	60	35
GR02.242	10	14	10	26	90	35
GR02.250	14	16	14	34	45	45
GR02.251	14	16	14	34	90	45
GR02.252	14	16	14	34	130	45
GR02.260	20	19	20	43	50	59
GR02.261	20	19	20	43	100	59
GR02.262	20	19	20	43	150	59

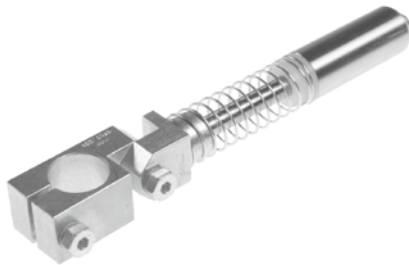


Gripper arms | Angle arms

Angle arm - spring-loaded, rotatable, with anti-twist protection

Angle arm - spring-loaded, rotatable, with anti-twist protection

Spring-loaded mounting of grippers, gripper fingers and other active gripper components



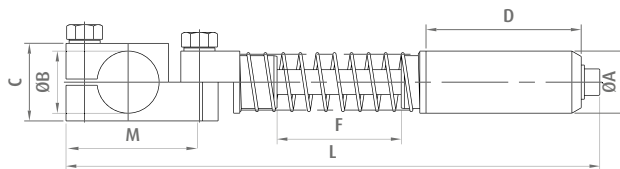
Product Description

- > Precise movements thanks to recirculating linear ball bearings for absorbing lateral forces and momentum
- > Designed for heavy loads

Technical Data

Item no.	Lift [mm]	Weight [oz]
GR03.200	40	6.42
GR03.201	40	7.13

Dimensions



Item no.	ØA [mm]	ØB [mm]	C [mm]	D [mm]	F [mm]	L [mm]	M [mm]
GR03.200	20	10	16	50	40	165	39
GR03.201	20	20	20x25	50	40	175	49



Suction fingers - rigid

Integration of vacuum cups into a gripper system



Product Description

> High installation flexibility thanks to two vacuum connections on head and shaft end

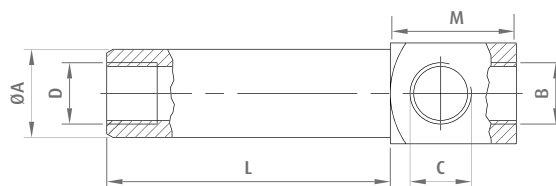
Ordering notes

Sealing plug suitable for both connections included in delivery

Technical Data

Item no.	Weight [oz]
GR03.001A	0.39
GR03.002A	0.56
GR03.003A	0.78
GR03.010A	0.95
GR03.011A	1.38
GR03.012A	1.73
GR03.036	2.26
GR03.037	3.53
GR03.038	4.83
GR03.039	7.16

Dimensions



Item no.	ØA [mm]	B	C	D	L [mm]	M [mm]
GR03.001A	10	M5	M5	M5	30	13
GR03.002A	10	M5	M5	M5	60	13
GR03.003A	10	M5	M5	M5	90	13
GR03.010A	14	G1/8	G1/8	G1/8	45	20
GR03.011A	14	G1/8	G1/8	G1/8	90	20
GR03.012A	14	G1/8	G1/8	G1/8	130	20
GR03.036	20	G1/4	G1/8	G1/8	50	23
GR03.037	20	G1/4	G1/8	G1/8	100	23
GR03.038	20	G1/4	G1/8	G1/8	150	23
GR03.039	30	G1/4	G1/4	--	200	30

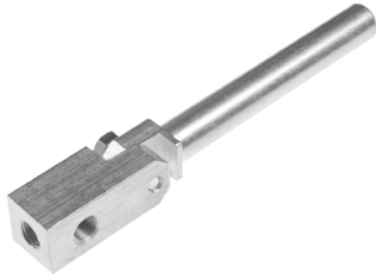


Gripper arms | Suction fingers

Suction fingers - rotatable

Suction fingers - rotatable

Integration of vacuum cups into a gripper system



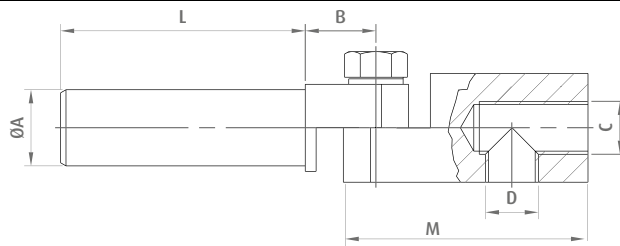
Product Description

- > Flexibility through rotational and linear adjustment
- > Ease of assembly due to use of screws with internal and external hex bits

Technical Data

Item no.	Weight [oz]
GR03.040	1.23
GR03.041A	1.34
GR03.042A	1.52
GR03.050A	2.05
GR03.051A	2.43
GR03.052A	2.75
GR03.070A	2.54
GR03.071A	3.07
GR03.072A	3.63
GR03.073A	3.28
GR03.074A	3.74
GR03.075A	4.34

Dimensions

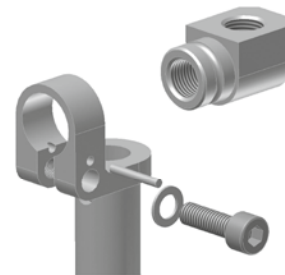


Item no.	ØA [mm]	B [mm]	C	D	L [mm]	M [mm]
GR03.040	10	11	M5	M5	30	36.5
GR03.041A	10	11	M5	M5	60	36.5
GR03.042A	10	11	M5	M5	90	36.5
GR03.050A	14	13	G1/8	G1/8	45	47
GR03.051A	14	13	G1/8	G1/8	90	47
GR03.052A	14	13	G1/8	G1/8	130	47
GR03.070A	20	15	G1/8	G1/8	50	47
GR03.071A	20	15	G1/8	G1/8	100	47
GR03.072A	20	15	G1/8	G1/8	150	47
GR03.073A	20	15	G1/4	G1/4	50	49
GR03.074A	20	15	G1/4	G1/4	100	49
GR03.075A	20	15	G1/4	G1/4	150	49



Modular suction fingers – rotatable, rigid

Integration of vacuum cups in gripper systems



Mounting construction

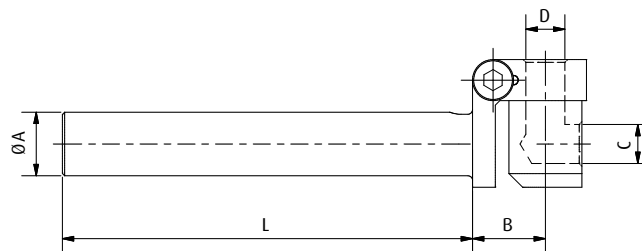
Product Description

- > Up to 50 % lighter in comparison to GR03.040 ff.
- > Infinitely variable angle adjustment
- > No snap ring, which means that compared with the competition installation and removal is optimized and safer
- > Fast conversion into a rotatable angular arm by replacing the vacuum head with clamping head GR02.240-242 ff.
- > Instead of the vacuum head, alternatively a gripper can be directly mounted
(e.g. GR03.240-242: suitable for grippers, series 80, 90, 100;
GR03.260-263: suitable for grippers, series 130, 140)

Technical Data

Item no.	Weight [oz]
GR03.240	0.53
GR03.241	0.63
GR03.242	0.74
GR03.250	1.02
GR03.251	1.31
GR03.252	1.62
GR03.260	2.01
GR03.261	2.5
GR03.262	3.03

Dimensions



Item no.	Ø A [mm]	B [mm]	C [mm]	D [mm]	L [mm]
GR03.240	10	14	M5	M5	30
GR03.241	10	14	M5	M5	60
GR03.242	10	14	M5	M5	90
GR03.250	14	16	G1/8	G1/8	45
GR03.251	14	16	G1/8	G1/8	90
GR03.252	14	16	G1/8	G1/8	130
GR03.260	20	19	G1/4	G1/4	50
GR03.261	20	19	G1/4	G1/4	100
GR03.262	20	19	G1/4	G1/4	150



Gripper arms | Suction fingers

Suction fingers - spring-loaded

Suction fingers - spring-loaded

Compensation of strokes when product is ejected from sprue mold



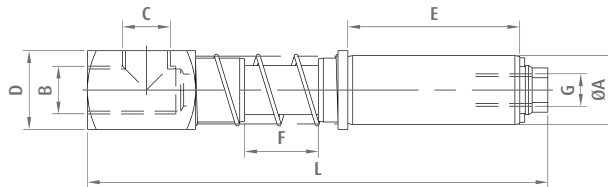
Product Description

- > Smooth motion through use of plastic bushing
- > Maximum process stability because of no jamming even with tilted loads
- > Flexibility through second air connection (GR03.090A and above)

Technical Data

Item no.	Lift [mm]	Weight [oz]
GR03.080A	10	0.63
GR03.081A	20	0.63
GR03.090A	15	1.59
GR03.091A	35	1.69
GR03.114	20	4.48
GR03.115	40	4.8

Dimensions

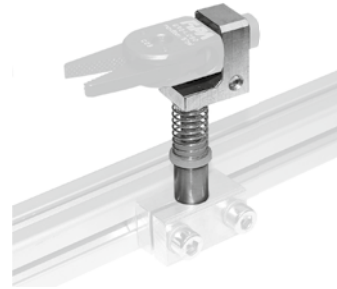


Item no.	ØA [mm]	B	C	D [mm]	E [mm]	F [mm]	G	L [mm]
GR03.080A	10	M5	M5	10	25	10	--	67
GR03.081A	10	M5	M5	10	25	20	--	77
GR03.090A	14	G1/8	G1/8	16	35	15	M5	93.5
GR03.091A	14	G1/8	G1/8	16	35	35	M5	113.5
GR03.114	20	G1/4	G1/8	20	55	20	G1/8	128.5
GR03.115	20	G1/4	G1/8	20	55	40	G1/8	148.5



Suction fingers – spring-loaded, rotatable, with anti-twist protection

Compensation of strokes when product is ejected from sprue mold



Product Description

- > Smooth motion through use of plastic bushing
- > Maximum process stability because of no jamming of the suction fingers, even with off centered loads or horizontal mounting
- > Rigid clamping of set angle

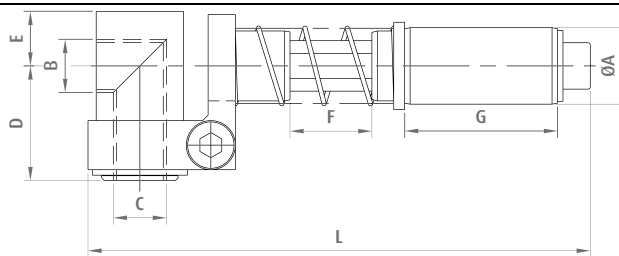
Note

Optional use, e.g. as spring-loaded fitting for sprue grippers (see picture)

Technical Data

Item no.	Lift [mm]	Weight [oz]
GR03.120A	10	1.23
GR03.121A	20	1.31
GR03.130A	15	2.65
GR03.131A	35	2.96
GR03.152A	20	7.3
GR03.153A	40	8.08

Dimensions



Item no.	ØA [mm]	B	C	D [mm]	E [mm]	F [mm]	G [mm]	L [mm]
GR03.120A	10	M5	M5	17	6	10	25	70
GR03.121A	10	M5	M5	17	6	20	25	80
GR03.130A	14	G1/8	G1/8	21	8	15	28	92
GR03.131A	14	G1/8	G1/8	21	8	35	28	112
GR03.152A	20	G1/4	G1/4	23.5	10	20	50	128
GR03.153A	20	G1/4	G1/4	23.5	10	40	50	148

