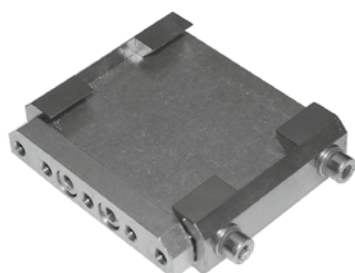




Quick-change system square – small



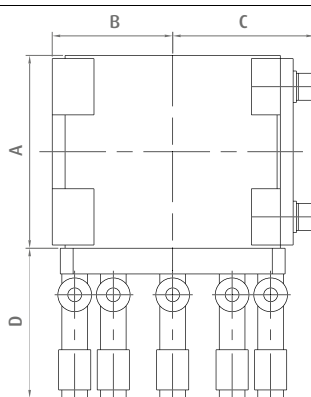
Product Description

- > Short exchange time thanks to easily replaceable base plates and quick-connection couplings
- > Space-saving thanks to compact size
- > Can be used on every robot
- > Quick connection couplings available as accessory

Technical Data

Item no.	Weight [oz]	Number of pneumatic connections	Compatible hose diameter [mm]	Max. lifting force [lbs]	Suitable accessories
GR05.041	11.11	5	6	11	Gripper base plate GR05.042 Quick-connection couplers KIT1-GR05.041

Dimensions



Item no.	A [mm]	B [mm]	C [mm]	D [mm]
GR05.041	60	39	44	48



Quick-change systems | Series "S"

Quick-change system square – large

Quick-change system square – large



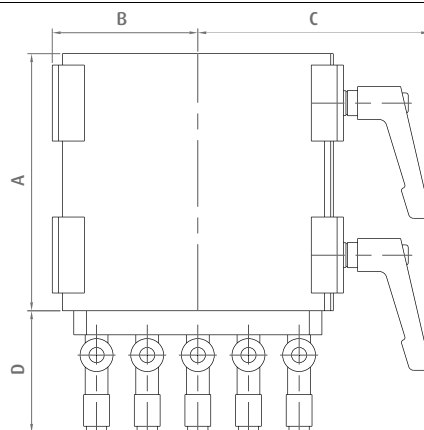
Product Description

- > Short exchange time thanks to easily replaceable base plates and quick-connection couplings
- > Can be used on every robot
- > Quick connection couplings available as accessory

Technical Data

Item no.	Weight [oz]	Number of pneumatic connections	Compatible hose diameter [mm]	Max. lifting force [lbs]	Suitable accessories
GR05.021	20.11	5	6	22	Gripper base plate GR05.022 Quick-connection couplers KIT1-GR05.021
GR05.031	69.49	5	3x6, 2x8	44.1	Gripper base plate GR05.032 Gripper base plate GR-XL05.032 Quick-connection couplers KIT1-GR05.031
GR05.051	159.44	5	3x6, 2x8	88.2	Gripper base plate GR05.052 Gripper base plate GR-XL05.052 Quick-connection couplers KIT1-GR05.031

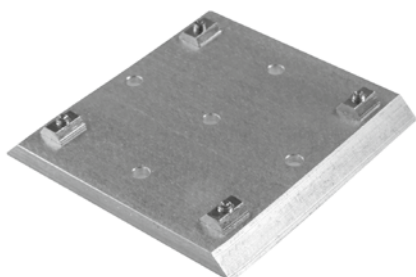
Dimensions



Item no.	A [mm]	B [mm]	C [mm]	D [mm]
GR05.021	100	60	89	48
GR05.031	160	100	134	70
GR05.051	250	152	190	70



Gripper base plates



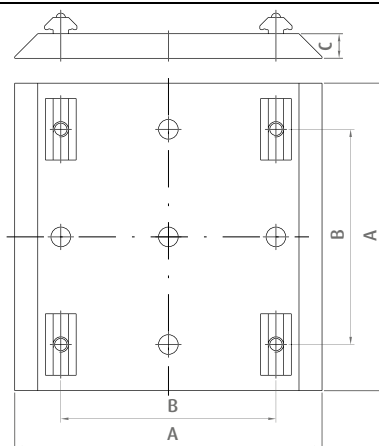
Product Description

- > Suitable for the square quick-change systems GR05.021 to GR05.051
- > Channel nuts and mounting bolts included in delivery

Technical Data

Item no.	Suitable for extrusion system	Weight [oz]	Suitable robot adapter plates
GR05.042	SLine / MLine	2.82	GR05.041
GR05.022	SLine / MLine	8.11	GR05.021
GR05.032	SLine / MLine	22.4	GR05.031
GR05.052	SLine / MLine	58.2	GR05.051
GR-XL05.032	XLine	26.53	GR05.031
GR-XL05.052	XLine	62.93	GR05.051

Dimensions



Item no.	A [mm]	B [mm]	C [mm]
GR05.042	60	35	8
GR05.022	100	70	8
GR05.032	160	120	10
GR05.052	250	200	10
GR-XL05.032	160	120	10
GR-XL05.052	250	200	10

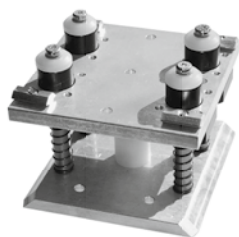


Quick-change systems | Series "S"

Gripper base plate for GR05.021 - spring-loaded

Gripper base plate for GR05.021 - spring-loaded

Absorption of stroke movement while ejecting the workpiece from the mold



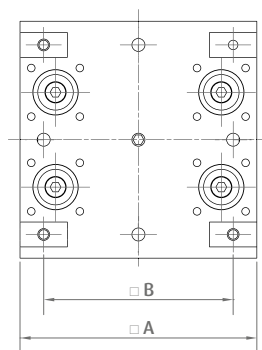
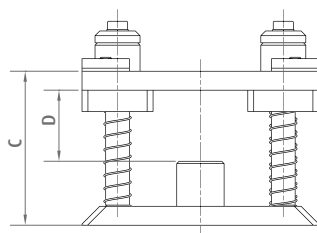
Product Description

- > Spring-loaded mounting of the complete gripper reduces the complexity compared to using many spring loaded elements
- > The use of high-quality slide bearings ensures accurate guidance
- > A second set of springs with different stiffnesses is included

Technical Data

Item no.	Suitable for extrusion system	Weight [oz]	Lift [mm]	Suitable robot adapter plates
GR05.023	SLine	23.28	30	GR05.021

Dimensions



Item no.	□A [mm]	□B [mm]	C [mm]	D [mm]
GR05.023	100	80	65	30



NEW



Quick-change system approx. Ø 50 mm – robot side

Product Description

- > Quick manual replacement of grippers on robots
- > Correct alignment of air connections ensured at all times
- > Secure, stable locking mechanism

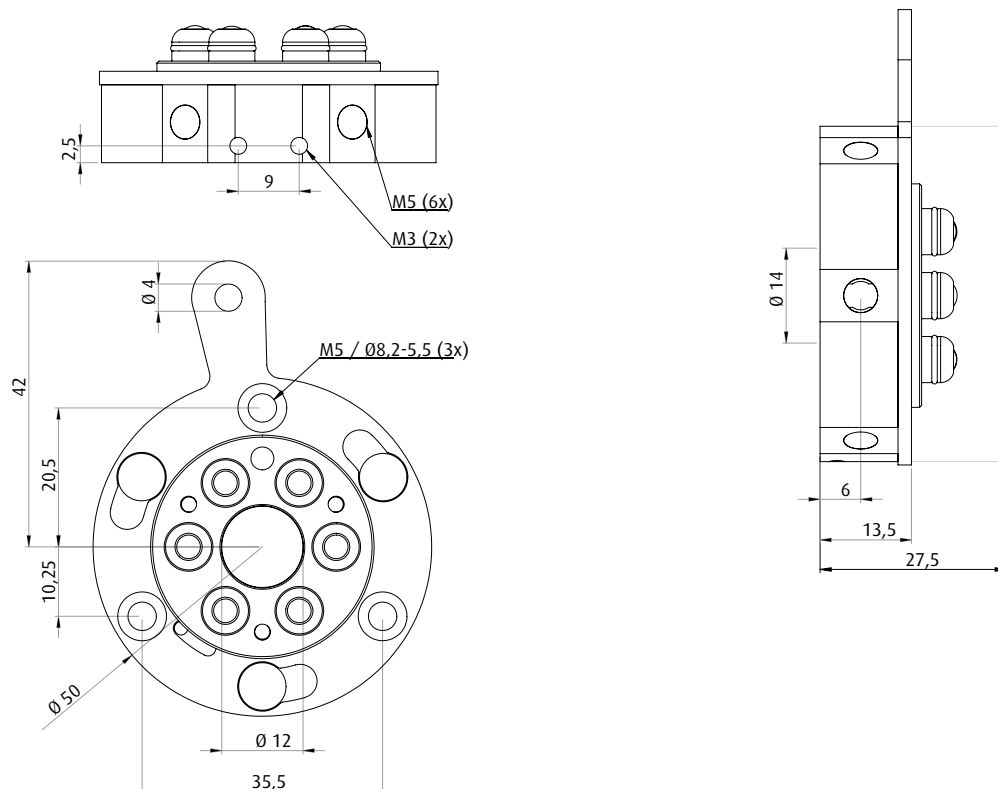
Ordering notes

- > On request also available in stainless steel (standard material: aluminum)

Technical Data

Item no.	Max. lifting force [lbs]	Number of pneumatic connections	Max. working pressure [psi]	Max. working vacuum [inHg]	Max. torque [Nm]	Max. bending moment [Nm]	Repeat accuracy [mm]	Weight [oz]
SR50-A	44.1	6xM5	87	-29.5	50	30	+/- 0,025	2.29

Dimensions





Quick-change systems | Series "SR"

Quick-change system approx. Ø 50 mm – gripper side

Quick-change system approx. Ø 50 mm – gripper side

NEW



Product Description

- > Quick manual replacement of grippers on robots
- > Correct alignment of air connections ensured at all times

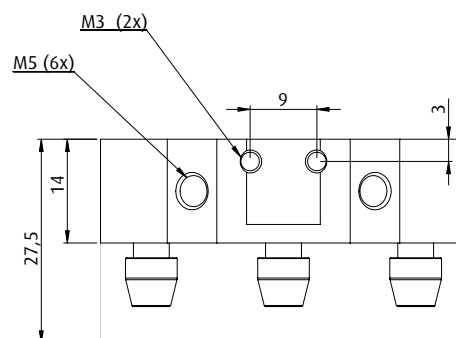
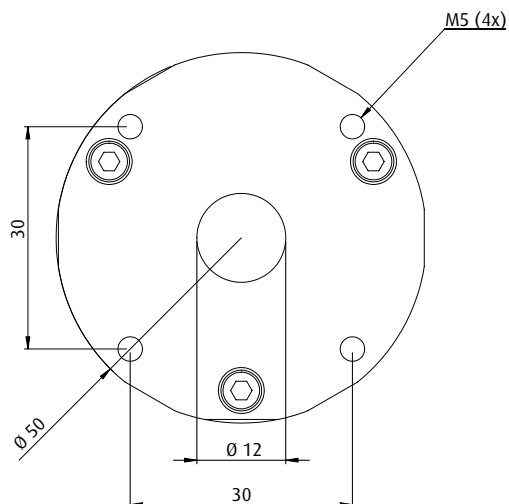
Ordering notes

- > On request also available in stainless steel (standard material: aluminum)

Technical Data

Item no.	Max. lifting force [lbs]	Number of pneumatic connections	Max. working pressure [psi]	Max. working vacuum [inHg]	Max. torque [Nm]	Max. bending moment [Nm]	Repeat accuracy [mm]	Weight [oz]
SR50-B	44.1	6xM5	87	-29.5	50	30	+/- 0,025	2.43

Dimensions





Round quick-change system, Ø 90-mm – robot side



SR90-A with integrated micro valves for automatic interruption of compressed air supply during disassembly of the quick changer

Product Description

- > Quick manual replacement of grippers on robots
- > Correct alignment of air connections ensured at all times

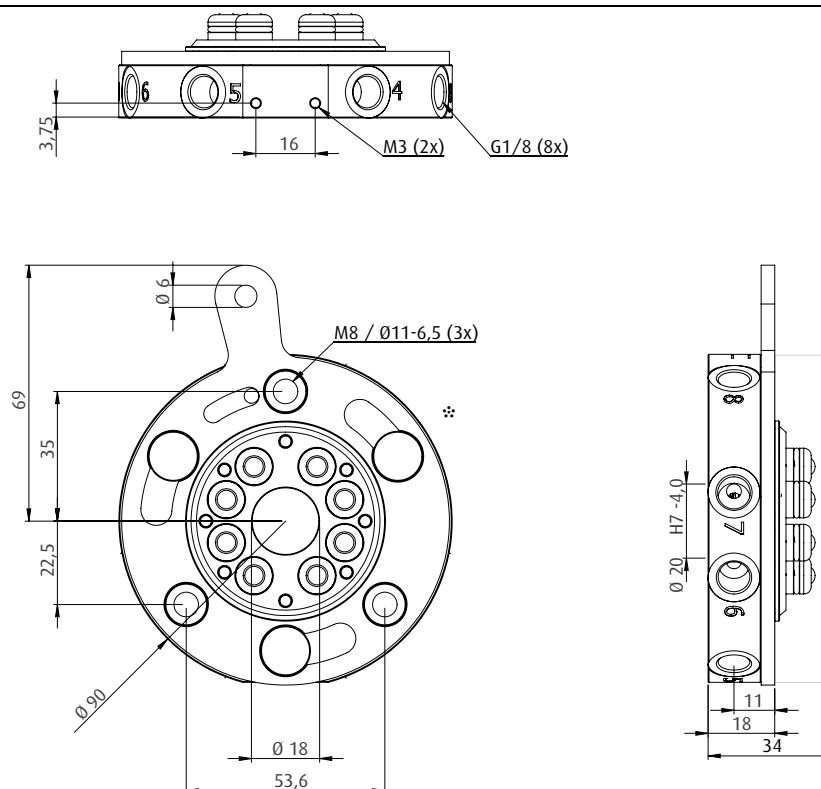
Ordering notes

- > On request also available in stainless steel (standard material: aluminum)
- > On request available with integrated micro valves for automatic interruption of compressed-air supply during de-coupling

Technical Data

Item no.	Max. lifting force [lbs]	Number of pneumatic connections	Max. working pressure [psi]	Max. working vacuum [inHg]	Max. torque [Nm]	Max. bending moment [Nm]	Repeat accuracy [mm]	Weight [oz]
SR90-A	88.2	8xG1/8	87	-29.5	100	60	+/- 0,025	11.29

Dimensions



* = Conical fixing screw for zero tolerance between the parts A and B after connection of robot and gripper side (not pictured)



Quick-change systems | Series "SR"

Round quick-change system, Ø 90-mm – gripper side

Round quick-change system, Ø 90-mm – gripper side



Product Description

- > Quick manual replacement of grippers on robots
- > Correct alignment of air connections ensured at all times

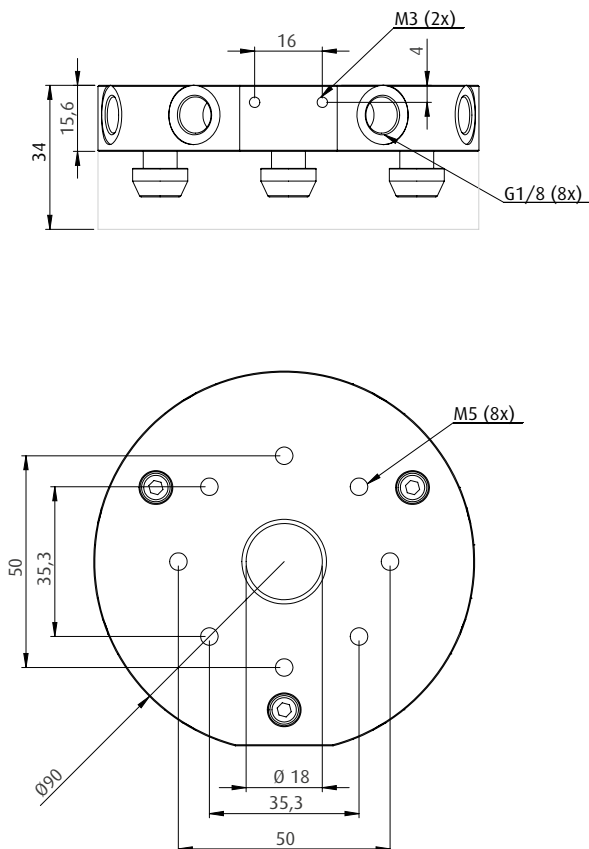
Ordering notes

- > On request also available in stainless steel (standard material: aluminum)

Technical Data

Item no.	Max. lifting force [lbs]	Number of pneumatic connections	Max. working pressure [psi]	Max. working vacuum [inHg]	Max. torque [Nm]	Max. bending moment [Nm]	Repeat accuracy [mm]	Weight [oz]
SR90-B	88.2	8xG1/8	87	-29.5	100	60	+/- 0,025	7.76

Dimensions





Round quick-change system, Ø 150-mm – robot side



Product Description

- > Quick manual replacement of grippers on robots
- > Correct alignment of air connections ensured at all times

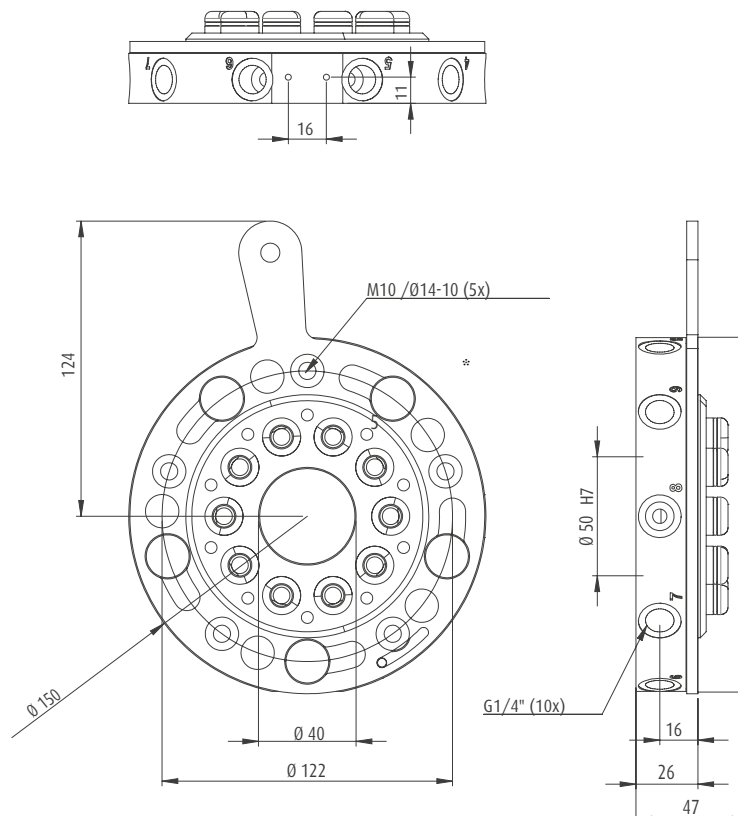
Ordering notes

- > On request also available in stainless steel (standard material: aluminum)

Technical Data

Item no.	Max. lifting force [lbs]	Number of pneumatic connections	Max. working pressure [psi]	Max. working vacuum [inHg]	Max. torque [Nm]	Max. bending moment [Nm]	Repeat accuracy [mm]	Weight [oz]
SR150-A	220.5	10xG1/8	87	-29.5	250	100	+/- 0,025	41.98

Dimensions



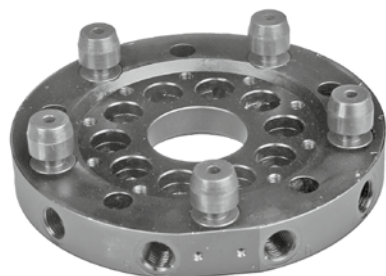
* = Conical fixing screw for zero tolerance between the parts A and B after connection of robot and gripper side (not pictured)



Quick-change systems | Series "SR"

Round quick-change system, Ø 150-mm – gripper side

Round quick-change system, Ø 150-mm – gripper side



Product Description

- > Quick manual replacement of grippers on robots
- > Correct alignment of air connections ensured at all times

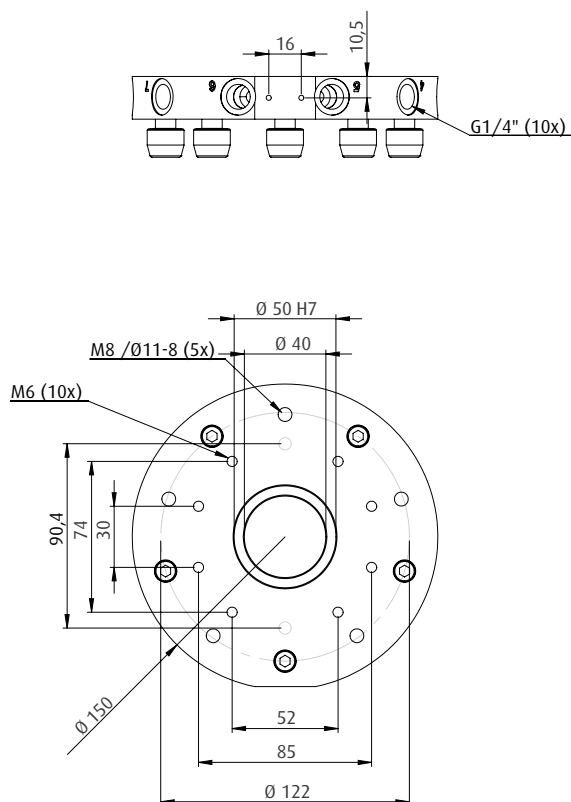
Ordering notes

- > On request also available in stainless steel (standard material: aluminum)

Technical Data

Item no.	Max. lifting force [lbs]	Number of pneumatic connections	Max. working pressure [psi]	Max. working vacuum [inHg]	Max. torque [Nm]	Max. bending moment [Nm]	Repeat accuracy [mm]	Weight [oz]
SR150-B	220.5	10xG1/8	87	-29.5	250	100	+/- 0,025	29.98

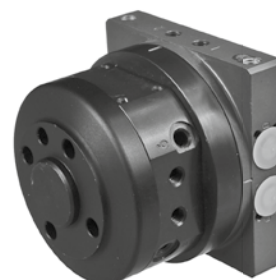
Dimensions





Automatic quick-change system approx. Ø 64 mm – robot side

NEW



Depiction of quick-change system ASR, robot and gripper side

Product Description

- > Automatic gripper exchange by means of compressed air control
- > For very short change-over times for a high degree of automation
- > Light, compact and robust

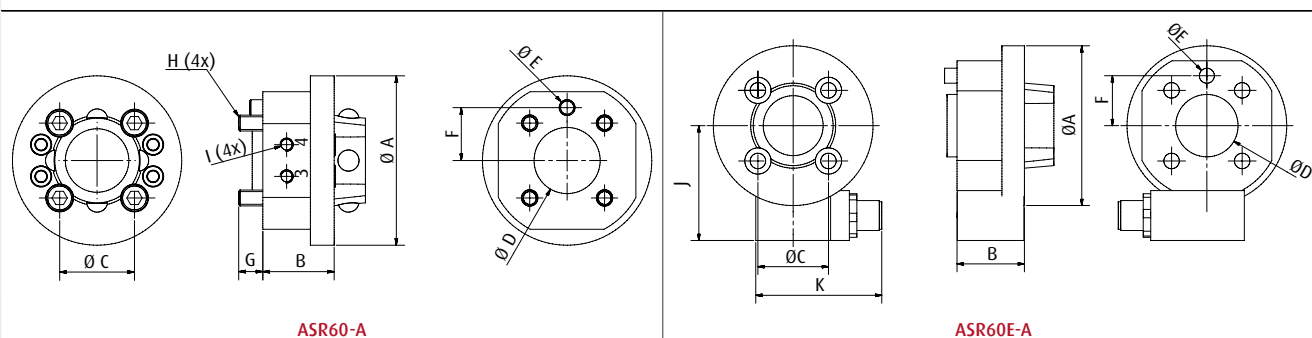
Ordering notes

- > Adaptor flange for connection to all commercially available robots on request
- > Further information on electric connection on request

Technical Data

Item no.	Max. lifting force [lbs]	Number of pneumatic connections	Max. torque [Nm]	Operating pressure [psi]	Weight [oz]	Max. operating voltage [V]	Number of electrical channels	Current consumption [A]	Connection
ASR60-A	44.1	4xM5	150	87 - 145	14.11	--	--	--	--
ASR60E-A	44.1	4xM5	150	87 - 145	15.87	60	8	2	M12

Dimensions



Item no.	ØA [mm]	B [mm]	ØC [mm]	ØD [mm]	ØE [mm]	F [mm]	G [mm]	H	I	J [mm]	K [mm]
ASR60-A	64	27	28.3	25	6	20	9.2	M6	M5	--	--
ASR60E-A	64	27	28.3	25	6	20	--	--	--	46	50.5



Quick-change systems | Series "ASR"

Quick-change system approx. Ø 64 mm – gripper side

Quick-change system approx. Ø 64 mm – gripper side

NEW

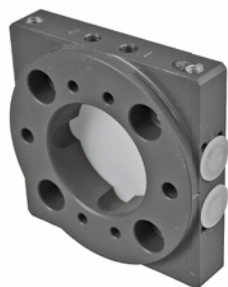


Illustration of quick-change system ASR, robot- and gripper side

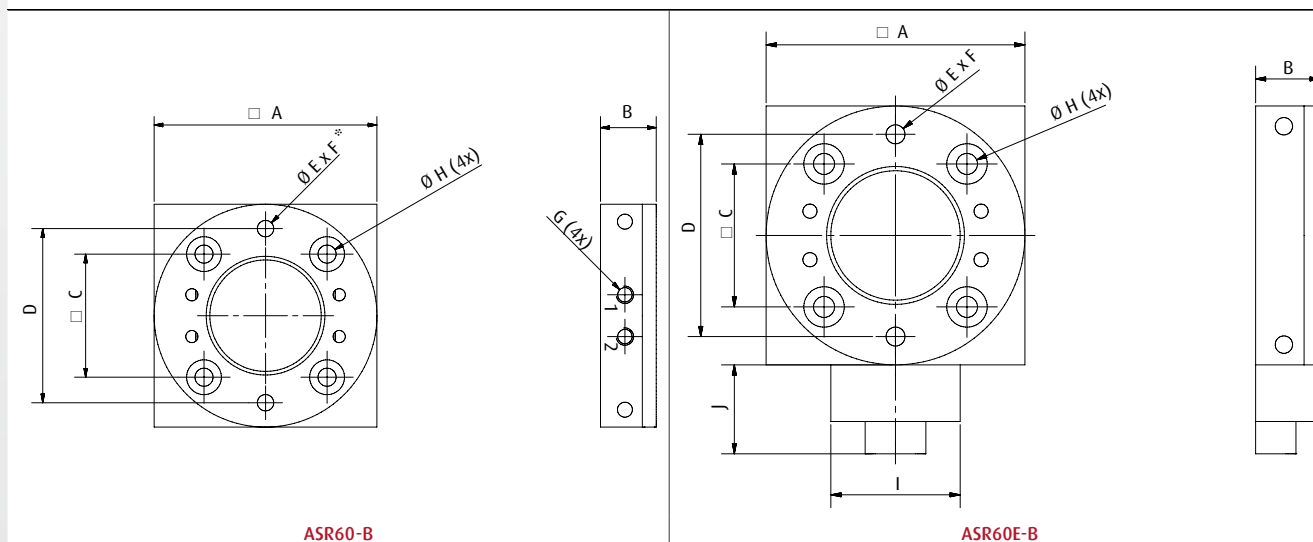
Product Description

- > Automatic gripper exchange by means of compressed air control
- > For very short change-over times for a high degree of automation
- > Light, compact and robust

Technical Data

Item no.	Max. lifting force [lbs]	Number of pneumatic connections	Max. torque [Nm]	Operating pressure [psi]	Weight [oz]	Number of electrical channels	Operating voltage [V]	Current consumption [A]	Connection
ASR60-B	44.1	4xM5	150	87 - 145	3.88	--	--	--	--
ASR60E-B	44.1	4xM5	150	87 - 145	4.59	8	60	2	M12

Dimensions



* = Fit for pin

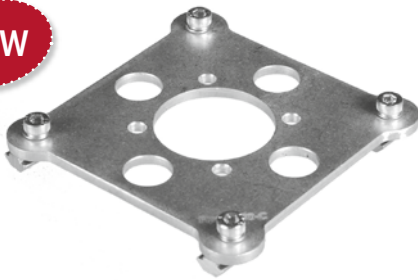
Item no.	□A [mm]	B	□C [mm]	D	ØE [mm]	F [mm]	G	ØH [mm]	I [mm]	J [mm]
ASR60-B	64	16	35.4	50	5	8	M5	5.2	--	--
ASR60E-B	64	16	35.4	50	5	8	M5	5.2	32	22



Adapter for quick-change system, round

Adapts FIPA quick-change system SR and quick changer of other suppliers directly on FIPA SLine and MLine extrusions

NEW



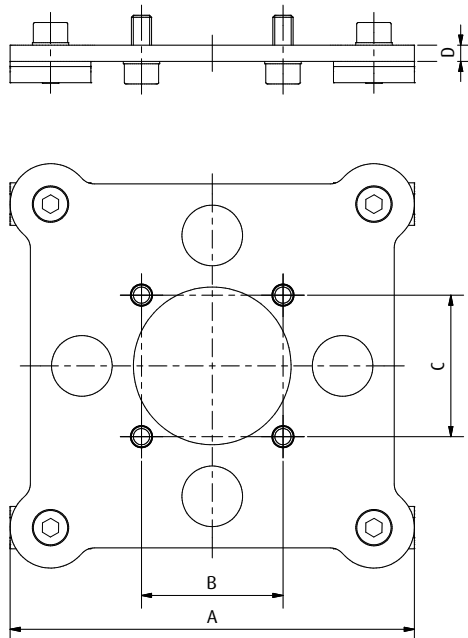
Ordering notes

Channel nuts and mounting bolts included in delivery

Technical Data

Item no.	Weight [oz]	Suitable quick-change systems
SR50-C	3.77	SR50-B SR50-A
SR90-C	4.13	SR90-B SR90-A
SR150-C	8.01	SR150-B SR150-A

Dimensions



Item no.	A [mm]	B [mm]	C [mm]	D [mm]
SR50-C	90	30	30	4
SR90-C	100	35	35	4
SR150-C	150	74	52	4



Quick-change systems | Robot adapter plates

Adapter for quick-change system, round

Adapter for quick-change system, round

Adapts SEPRO base plates Ø 80, 90 and 120 mm directly on the FIPA SLine and MLine extrusions

NEW



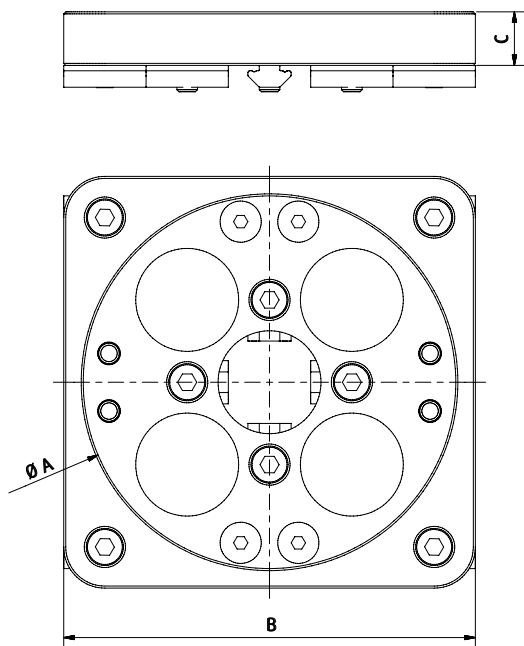
Ordering notes

Channel nuts and mounting bolts included in delivery

Technical Data

Item no.	Weight [oz]	Suitable quick-change systems
GR05.100	8.32	SEPRO AM02S0716605
GR05.101	9.59	SEPRO BP 90
GR05.102	14.11	SEPRO BP 120

Dimensions



Item no.	A [mm]	B [mm]	C [mm]
GR05.100	80	90	13
GR05.101	90	100	13
GR05.102	120	130	14



Wall bracket for rectangular quick-change plates

NEW



Product Description

- > Simple, optimal mounting of gripping systems
- > Also suitable for rectangular gripper base plates of other suppliers

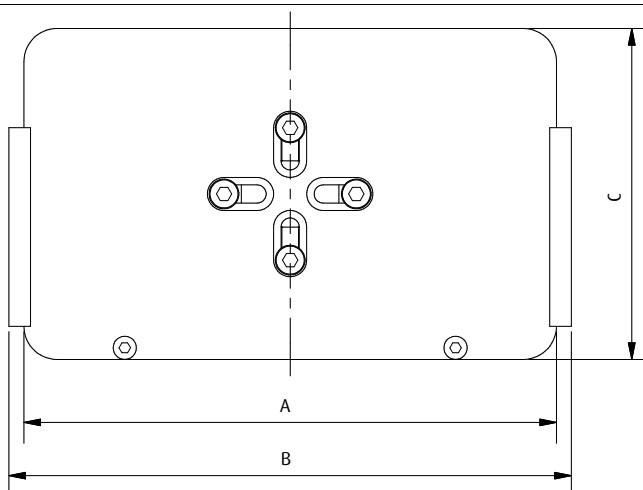
Ordering notes

Mounting material included in delivery

Technical Data

Item no.	Weight [oz]	Suitable gripper base plate
GR05.042-W	5.11	GR05.042
GR05.022-W	7.48	GR05.022
GR05.032-W	13.58	GR05.032

Dimensions



Item no.	A [mm]	B [mm]	C [mm]
GR05.042-W	60	70	80
GR05.022-W	100	110	80
GR05.032-W	160	170	100

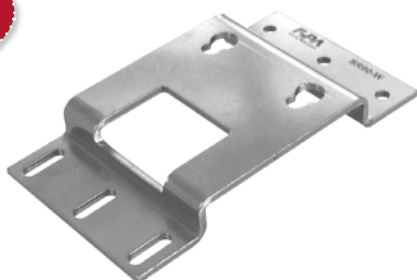


Quick-change systems | Wall brackets for gripper systems

Wall bracket for gripper systems with round base plate

Wall bracket for gripper systems with round base plate

NEW



Wall bracket SR90-W

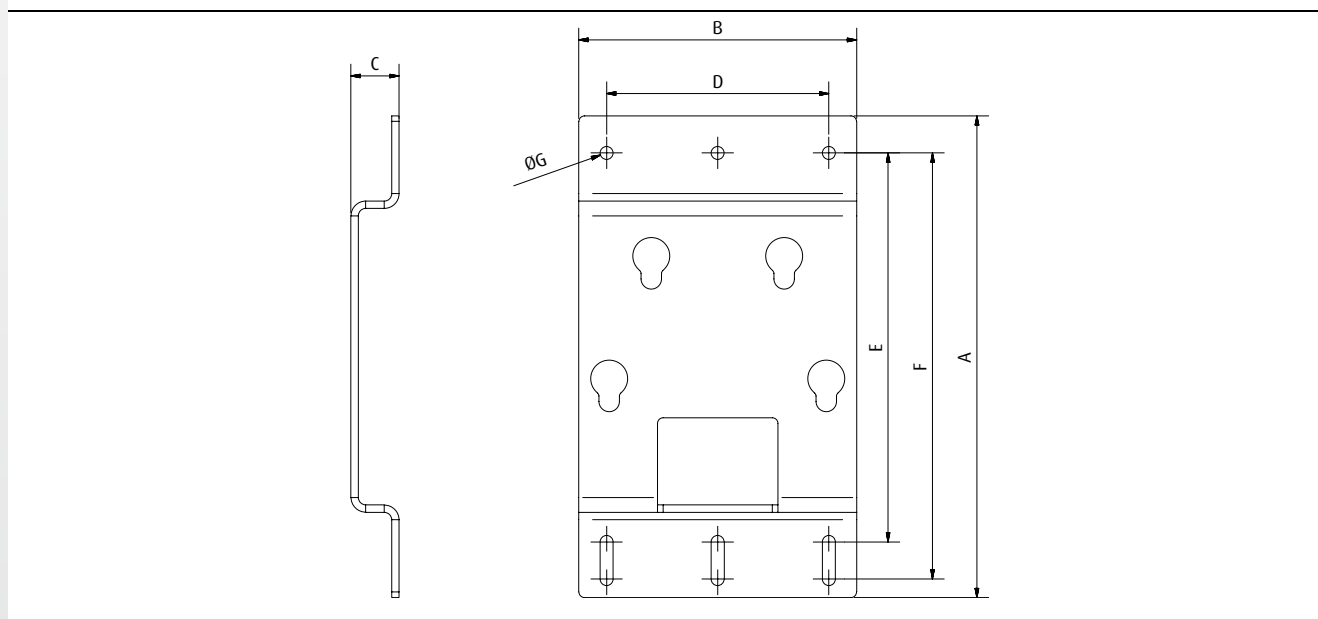
Product Description

- > Easy, gentle storage of gripper systems based on round quick change systems FIPA SR
- > Also suitable for round gripper systems of other suppliers

Technical Data

Item no.	Weight [oz]	Suitable quick-change systems
SR90-W	21.16	SR90-B
SR150-W	42.33	SR150-B

Dimensions



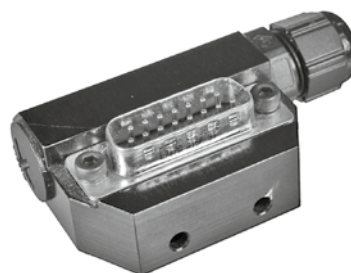
Item no.	A [mm]	B [mm]	C [mm]	D [mm]	E [mm]	F [mm]	ØG [mm]
SR90-W	180	100	22	80	142	158	7
SR150-W	260	150	26	120	210	230	7



NEW



Module 20.535 for the robot side



Module 20.536 for the gripper side

Product Description

- > Electronic interface between robot and gripper
- > SUB-D plug or jack
- > Electric plug connector for SR50 on request
- > Max. cable cross section 0,14 mm² based on 16-18-wire cable

Technical Data

Item no.	Number of Pins	Operating voltage [V DC]	Power consumption [W]	Weight [oz]	Suitable quick-change systems
20.535	15	24	0.5	1.48	SR90-A SR150-A
20.536	15	24	0.5	1.45	SR90-B SR150-B

Examples of application

- > SR90 with electric connectors

